



TS-8800 ^{Plus}



SHENZHEN BONDWAY ELECTRONICS CO., LTD

ADD: A1205,NO.391, AINAN ROAD,,LONGGANG DIST, SHENZHEN518116,CHINA

TEL:0086-755-86224650 26400367 FAX:0086-755-26522952

EMAIL:info@szbondway.com; kevinbondway@gmail.com

www.szbondway.com www.bondwaymedical.com



SHENZHEN BONDWAY ELECTRONICS CO.,LTD.

TS-8800 ^{Plus}

NEW GENERATION OF B/W 4D
ULTRASOUND SOLUTION WITH
COMPACT DESIGN



TS-8800^{Plus}

BONDWAY
since 2006

SHENZHEN BONDWAY ELECTRONICS CO. LTD.

Upgraded on the new generation platform, TS-8800Plus is empowered with 15-inch medical LCD, optional built-in lithium battery, enhanced B/W images and upgradable color Doppler package.



VERSATILE 4D CAPABILITY

TS-8800Plus offers excellent 4D imaging at an amazing price. Volumetric imaging technology covers obstetric 4D fetus imaging and gynecological transvaginal volumetric imaging, which show more accurate and specific images for different clinical demands.

SPATIAL COMPOUND IMAGING

The technology helps to ease echo artifacts and improve spatial resolution by scanning the target with multi-direction beamforming.

ADVANCED IMAGING TECHNOLOGY

Speckle reduction technology

The technology assists to reduce noise and artifacts, purify tissue shading and edging, improve contrast resolution and identification of early tissue/structure lesion.

Smart one key optimization

The system smartly adjusts TGC and B gain in B mode as well as base line, PRF and PW gain to acquire the best B/W image and PW image only by one-key press.

VALUE-ADDED CLINICAL SOLUTIONS

Panoramic imaging

The system allows extending wider view for doctors to scan large area tissues with the movement of transducer scanning.

Wireless image transmission

The system offers mobile working in hospitals and clinics by displaying on-scan images via iPad, iPhone and wireless PC printer even if the doctor is away from the ultrasound system.

Color Doppler upgradeability

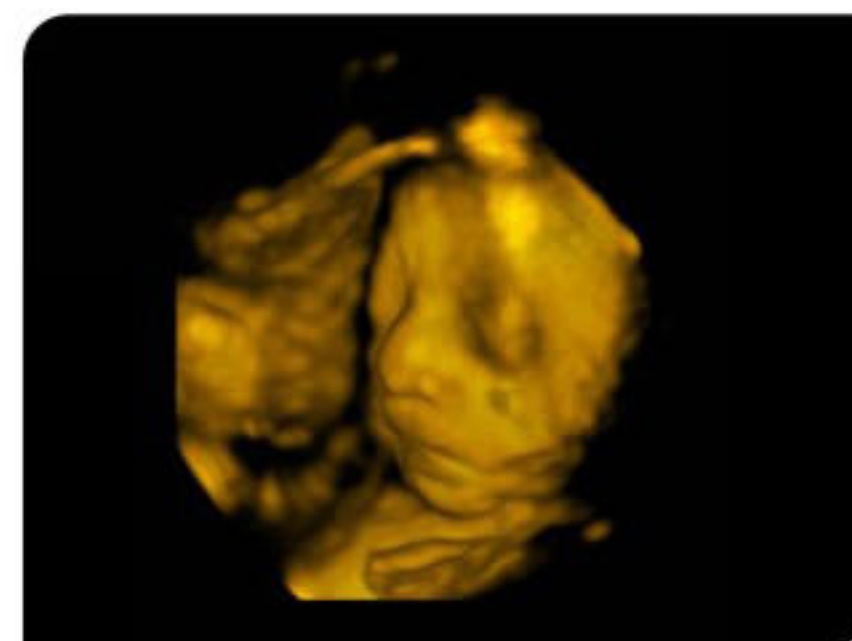
The system supports upgrades of color flow mapping, pulsed wave Doppler and triplex mode, which make itself a complete color Doppler ultrasound system ideal for users at the entry level.



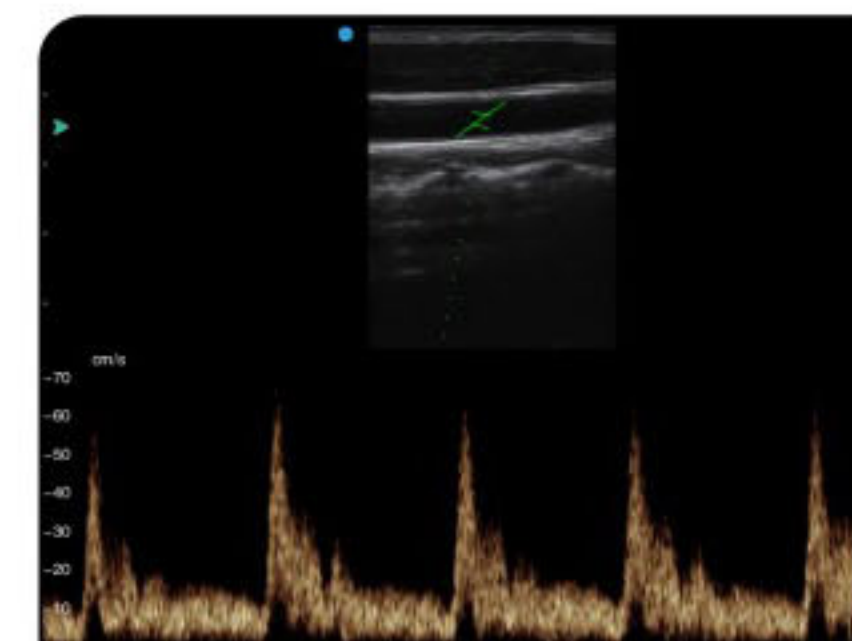
Fetal ear



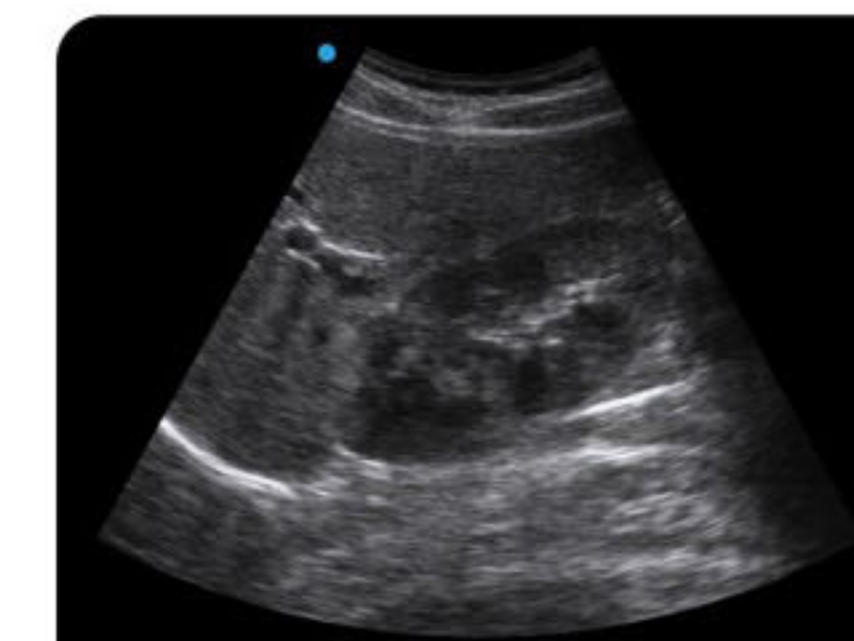
Fetal face



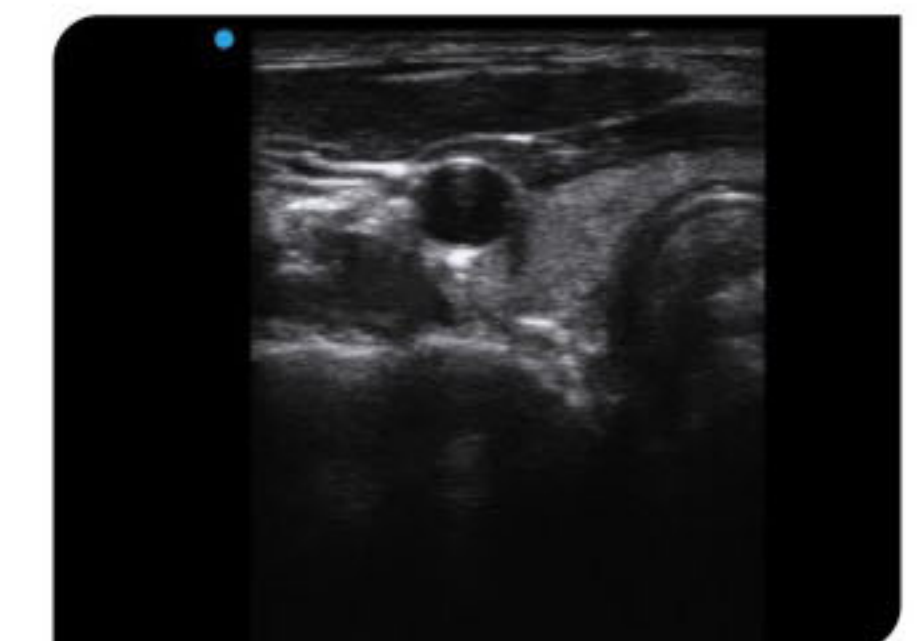
Fetal face



Carotid PW mode



Hepatorenal section



Thyroid